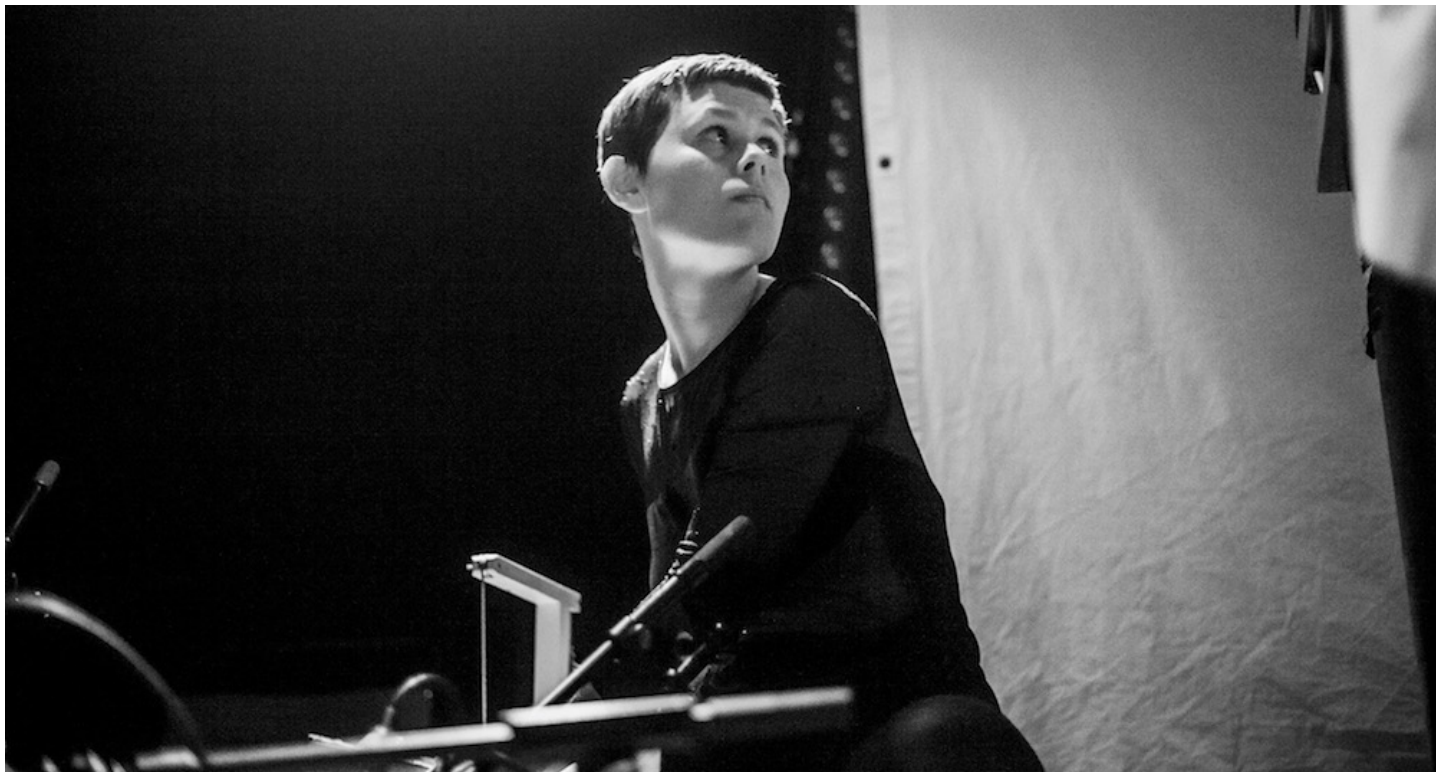


Ragnhild May @ EMS 18-19 September, 2018

📅 Published: 02 July 2018



Ragnhild May (<https://www.ragnhildmay.com/>)'s (DK) works are centered around the relationship between body and instrument. Musical instruments can be seen as extensions of the body, and her works explores their structures, systems and cultural connotations as well as acoustic qualities.

Ragnhild May has been artist in residency at International Studio and Curatorial Program, she has studied at visual arts at The Jutland Art Academy (DK) and Academy of Fine Arts Vienna (AT) and composition at Milton Avery Graduate School of the Arts Bard College.